



VISIONING WORKSHOP

for the:

Coatesville Area
School District

15 January 2019



SCHRADERGROUP



- 1 proposed project
- 2 21st century elementary schools
- 3 site visit review
- 4 feedback session
- 5 next steps



- 1 proposed project
- 2 21st century elementary schools
- 3 site visit review
- 4 feedback session
- 5 next steps









PROJECT INFORMATION

- proposed site
 - Acreage: approximately 20 acres +/-
 - Site particulars:
 - General plateau however sloping top to bottom on southeast side
 - Kings highway is a PennDOT roadway
 - District storage currently located in northwest portion of the site
 - Modular classrooms on the northeast corner of the facility
- facility:
 - Existing - 52,000 s.f. plus 4,000 s.f. modular
 - Proposed - 2-story proposed facility of 107,000 s.f.
- parking for:
 - zoning minimum or 150 spaces
- playing fields:
 - provide for general purpose fields and recreation fields
- other:
 - construct while existing building remains in operation

- 1 proposed project
- 2 21st century elementary schools
- 3 site visit review
- 4 feedback session
- 5 next steps



21st CENTURY LEARNING

	LEARNING TYPE	SPACE TYPE
	▪ TRADITIONAL INSTRUCTION	▪ MULTIPLE SIZED INSTRUCTIONAL SPACE
	▪ ONE-ON-ONE	▪ SMALL GROUP WORK SPACES
	▪ RESEARCH/ INVESTIGATE	▪ OPEN RESOURCE/ MEDIA CENTERS
	▪ MAKE/ DEVELOP	▪ LARGE GROUP PROJECT AREAS
	▪ PRESENT/ REPORT OUT	▪ PRESENTATION AREAS
	▪ COMMUNITY/ INTERNAL COMMUNITY	▪ FULL-SIZED ACTIVITY AREAS

21st CENTURY LEARNING

- A
- B
- C
- D
- E
- F

MULTIPLE SIZED INSTRUCTIONAL SPACE

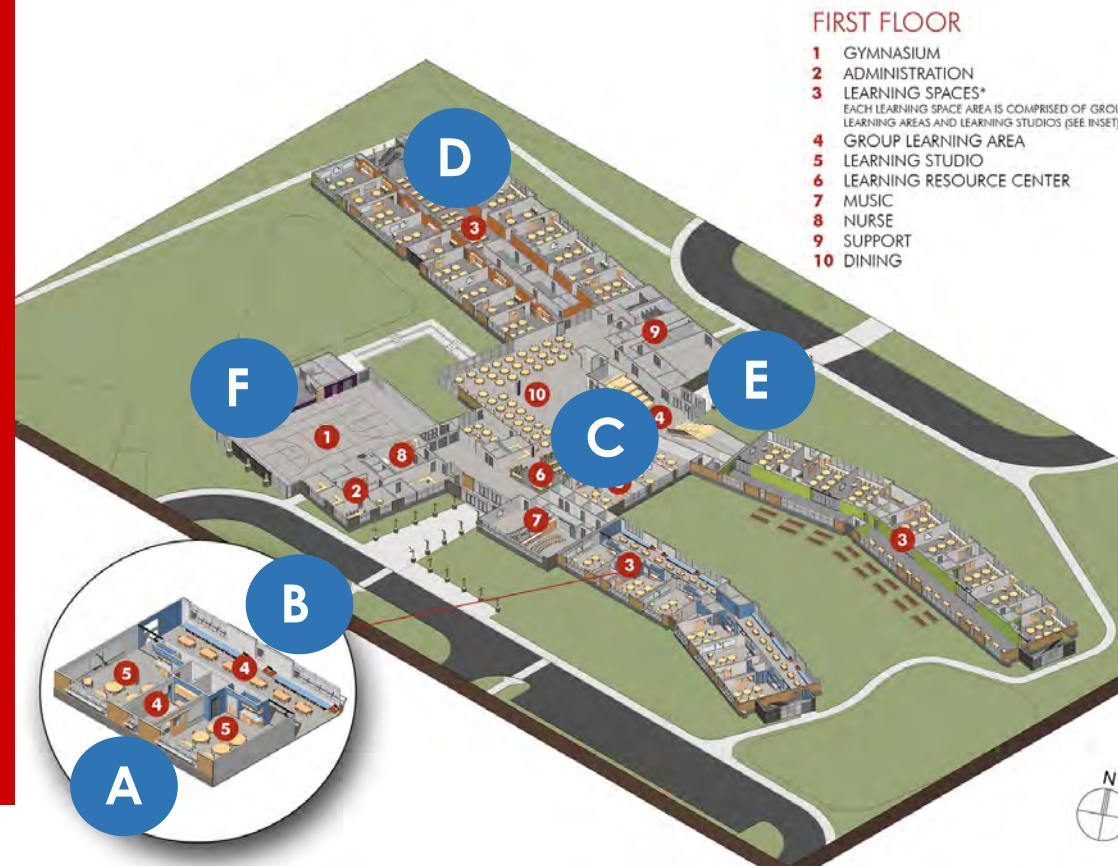
SMALL GROUP WORK SPACES

OPEN RESOURCE/ MEDIA CENTERS

LARGE GROUP PROJECT AREAS

PRESENTATION AREAS

FULL-SIZED ACTIVITY AREAS



A

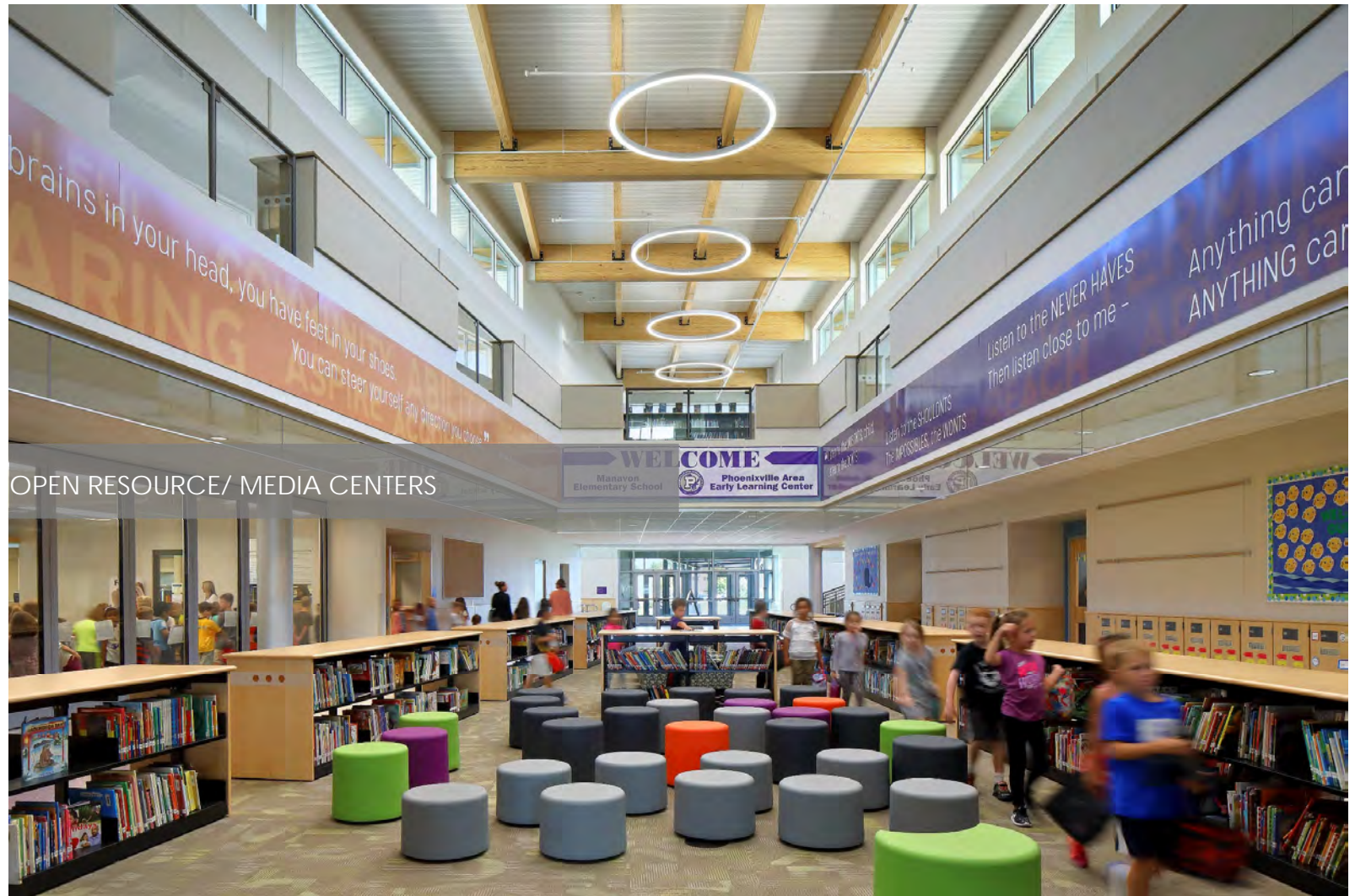
MULTIPLE SIZED INSTRUCTIONAL SPACES



B

SMALL GROUP WORK SPACES





OPEN RESOURCE/ MEDIA CENTERS

D

LARGE GROUP PROJECT AREAS



E

PRESENTATION AREAS



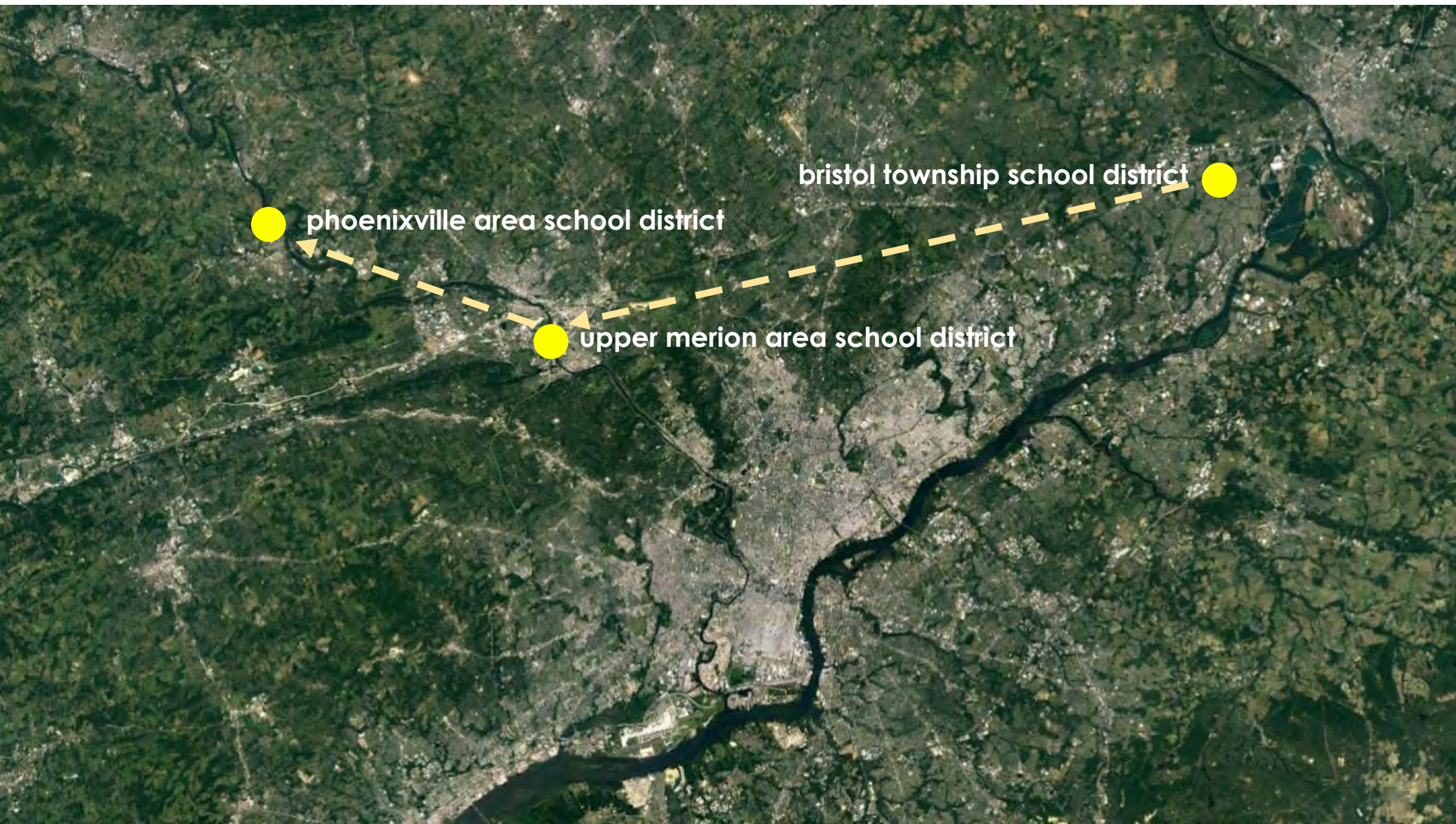
F

FULL-SIZED ACTIVITY AREAS



- 1 proposed project
- 2 21st century elementary schools
- 3 site visit review
- 4 feedback session
- 5 next steps



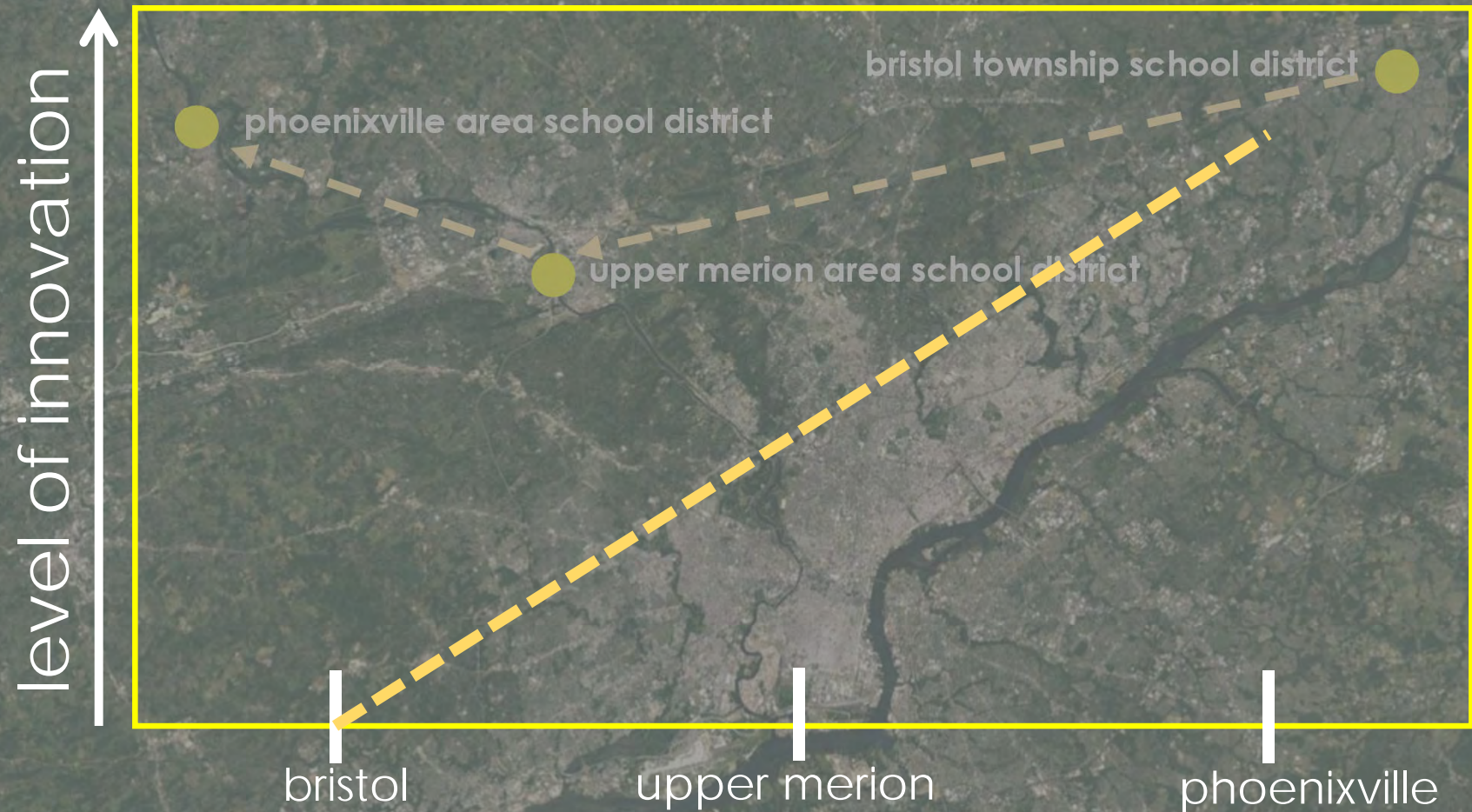


phoenixville area school district

bristol township school district

upper merion area school district

educational space innovation scale



MILL CREEK ELEMENTARY SCHOOL

Bristol Township School District



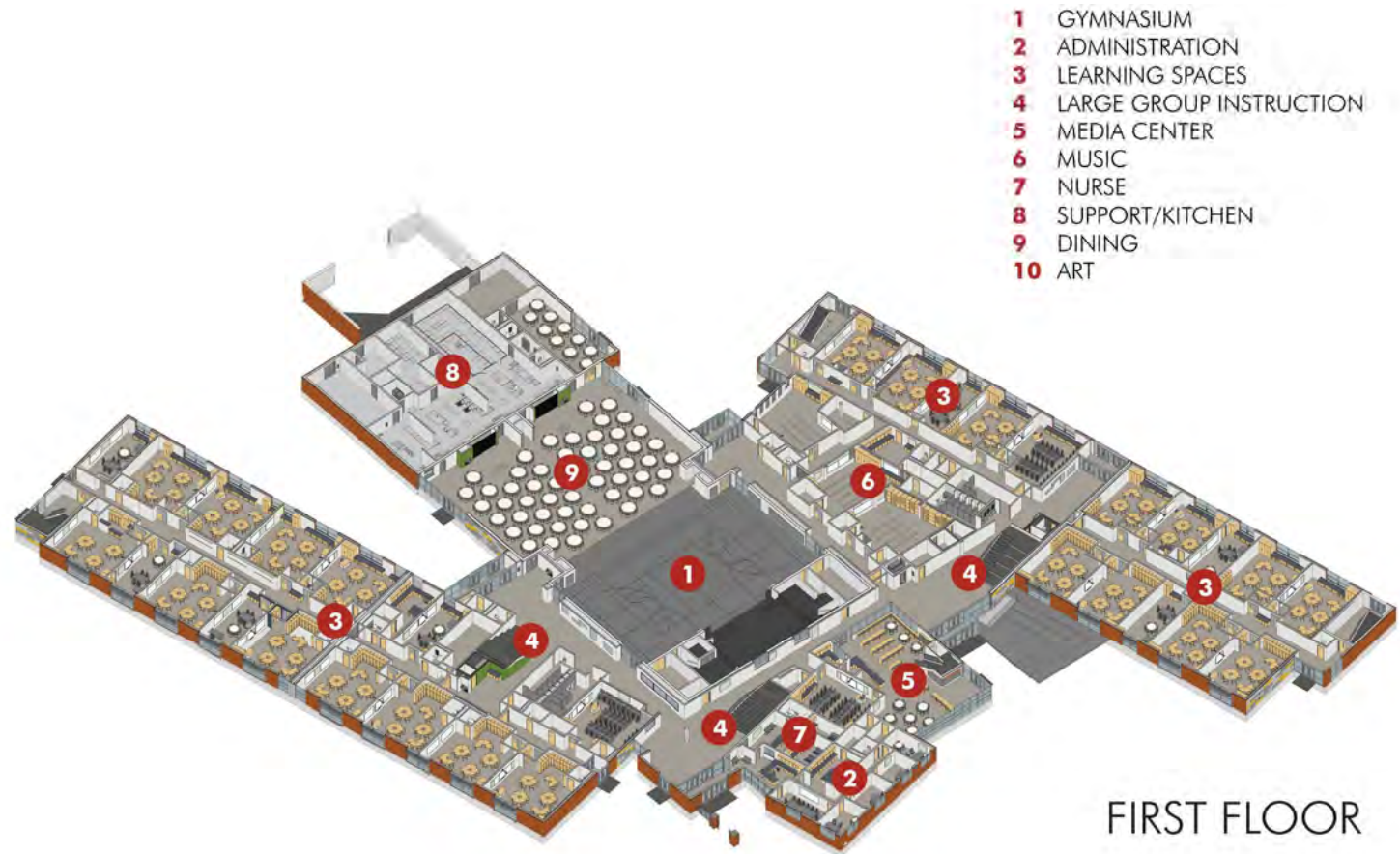
SCHRADERGROUP



plan highlights

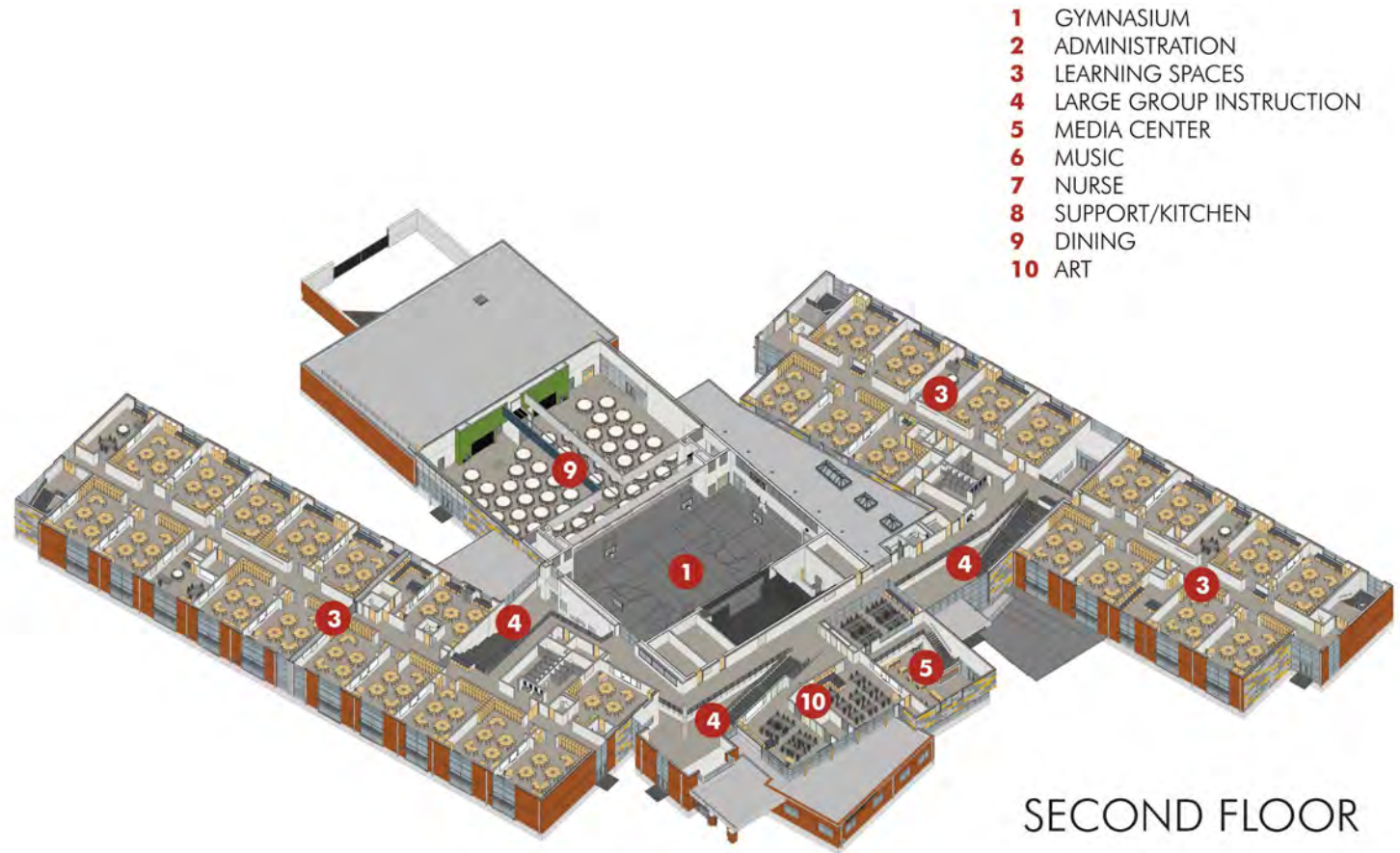
first floor

- Share core as hub of all circulation
- Sharing of media center by K-2 and 3-5 accessible from both floors
- Split dining concept
- Community gymnasium
- Itinerant and support instructor workspaces
- Learning stair as the vertical circulation
- Clear flow-through from parent drop off to bus drop off
- Expression of building systems



plan highlights second floor

- Share core as hub of all circulation
- Sharing of media center by K-2 and 3-5 accessible from both floors
- Split dining concept
- Community gymnasium
- Itinerant and support instructor workspaces
- Learning stair as the vertical circulation
- Clear flow-through from parent drop off to bus drop off
- Expression of building systems



building specifics

building area: 140,400 s.f.
site size: 22 acres
student capacity: 1300
grades: K-5
construction timeframe: 5/15-8/16

building construction cost: \$29,500,000
site construction cost: \$ 4,000,000
total construction cost: \$33,500,000

HVAC: ground sourced heat pump system





SCHRADERGROUP





SCHRADERGROUP



SCHRADERGROUP



SCHRADERGROUP



SCHRADERGROUP



SCHRADERGROUP



SCHRADERGROUP



SCHRADERGROUP



SCHRADERGROUP



SCHRADERGROUP



SCHRADERGROUP



SCHRADERGROUP



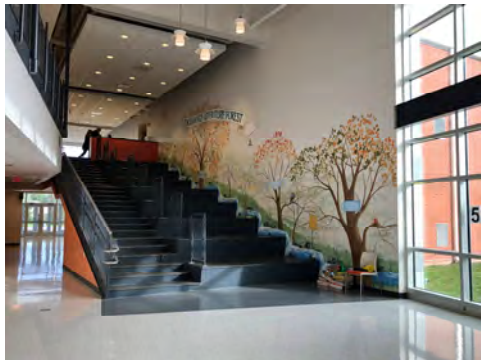
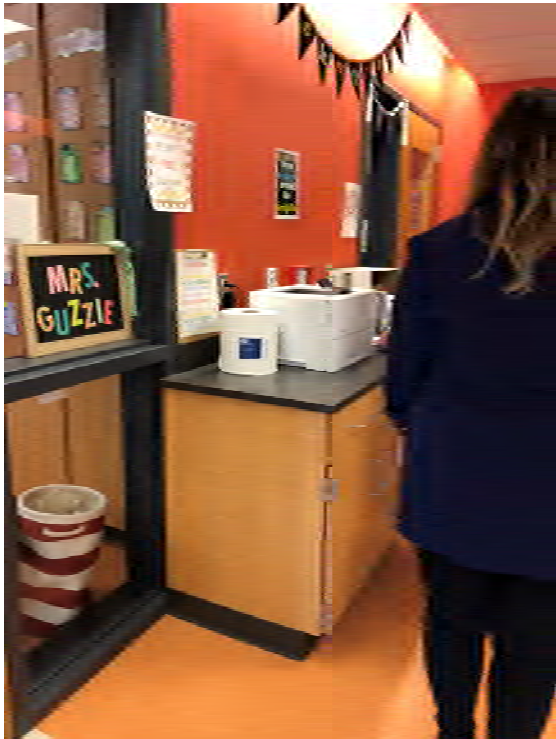
SCHRADERGROUP



MILL CREEK
ELEMENTARY SCHOOL

LEARNING RESOURCE

SCHRADERGROUP



GULPH ELEMENTARY SCHOOL

Upper Merion Area School District





plan highlights

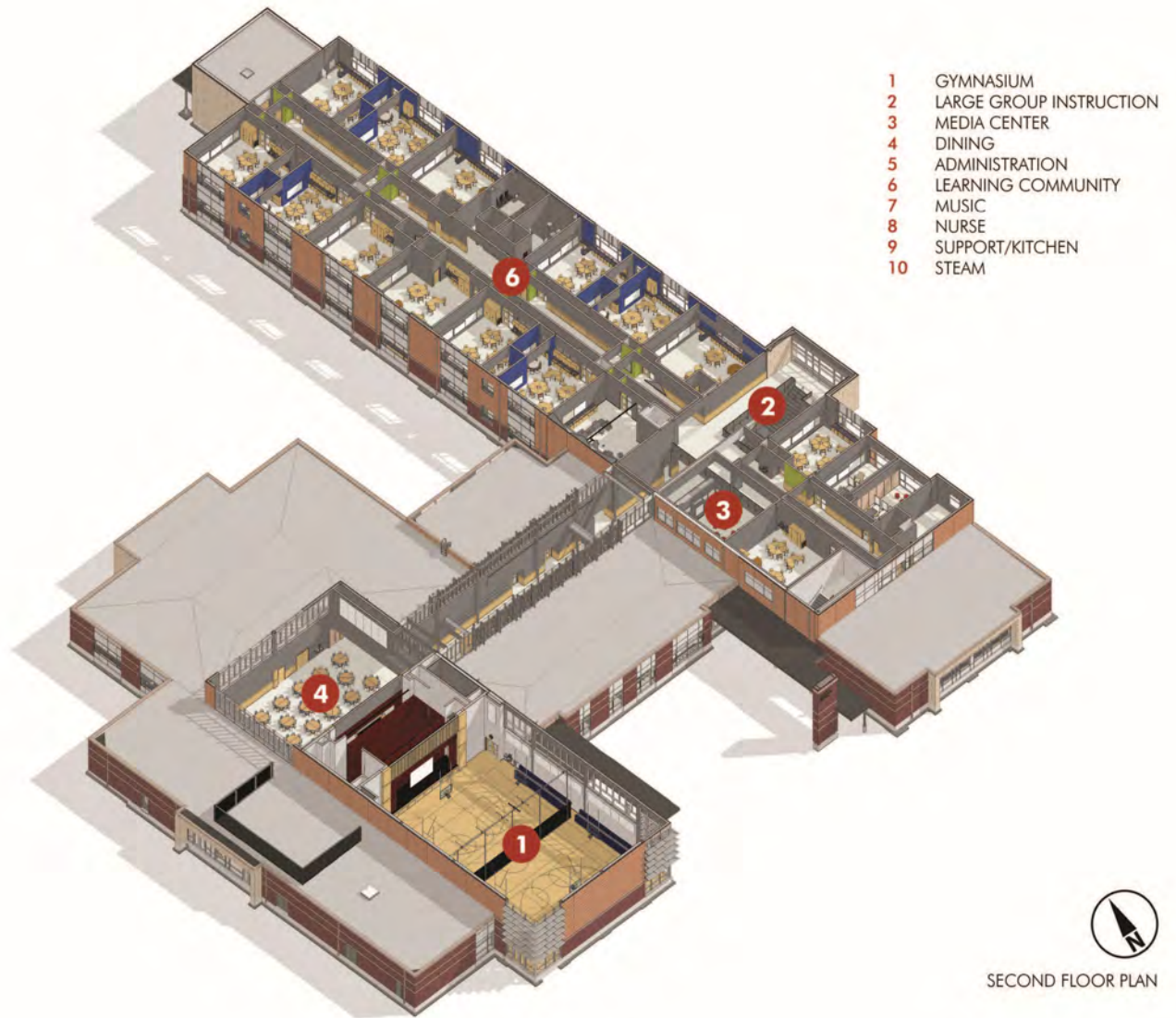
first floor

- Central core as hub of all circulation
- Separate Kindergarten area
- Sharing of media center vertically
- Dining can be open to or separated from balance of building
- Community gymnasium
- Breakout space differentiation depending on grade structure
- Push-in concept for learning support and special education
- Itinerant and support instructor workspaces
- Learning stair as the vertical circulation



plan highlights second floor

- Central core as hub of all circulation
- Separate Kindergarten area
- Sharing of media center vertically
- Dining can be open to or separated from balance of building
- Community gymnasium
- Breakout space differentiation depending on grade structure
- Push-in concept for learning support and special education
- Itinerant and support instructor workspaces
- Learning stair as the vertical circulation



building specifics

building area: 95,538 s.f.
site size: 20 acres
student capacity: 525
grades: K-4
construction timeframe: 5/17-8/18

building construction cost: \$28,600,000
site construction cost: \$ 3,500,000
total construction cost: \$32,100,000

HVAC: central plant and VAV system





SCHRADERGROUP



SCHRADERGROUP



SCHRADERGROUP





PEALE

"If you stopped yourself every time you said 'I have to' and changed it to 'I get to' it might change your entire experience." - KYLE RADERLY

"Try to be a rainbow in someone's cloud" - MARY ANGELO

SCHRADERGROUP



SCHRADERGROUP



SCHRADERGROUP



SCHRADERGROUP





SCHRADERGROUP



SCHRADERGROUP



SCHRADERGROUP



SCHRADERGROUP









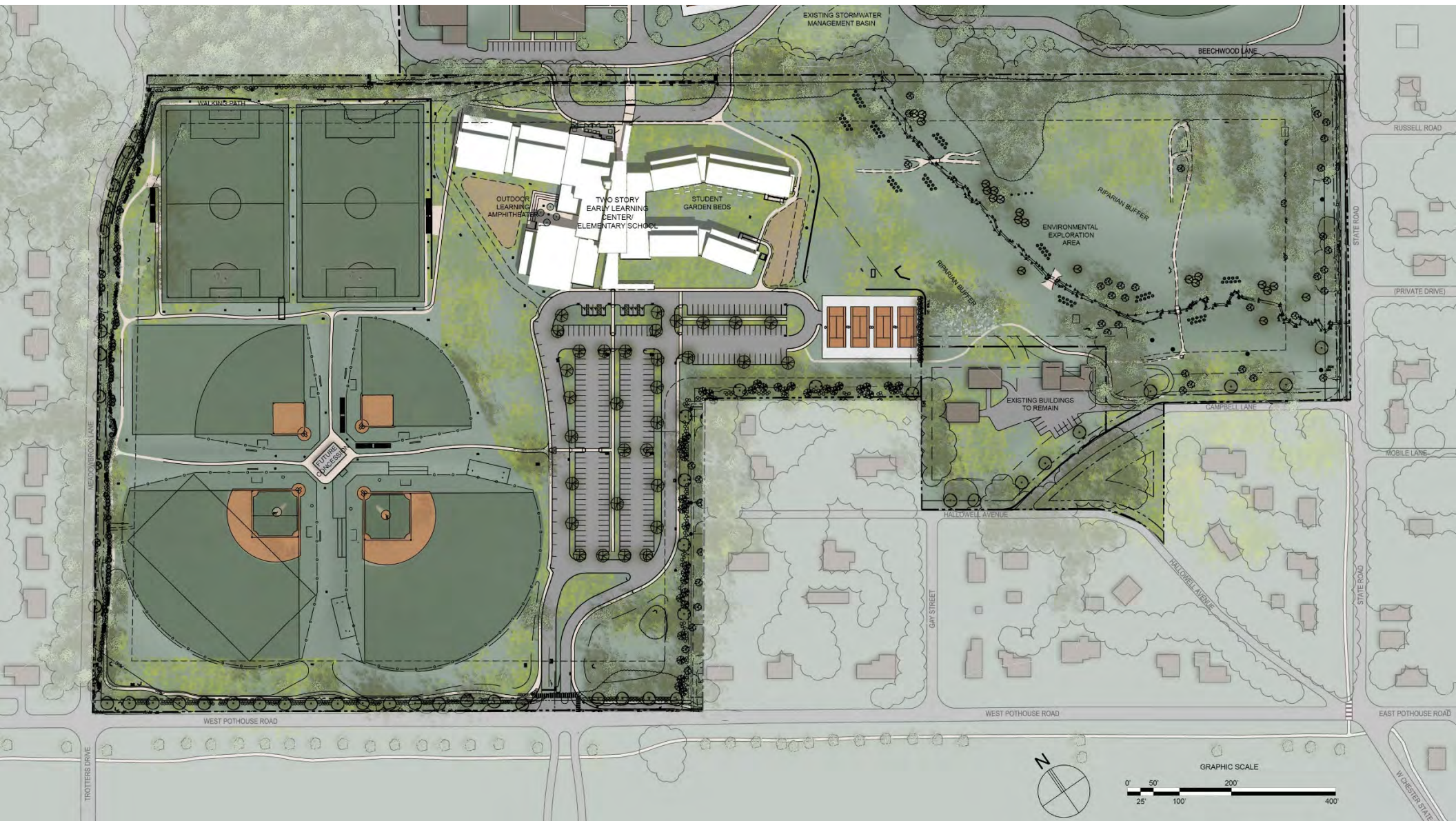
SCHRADERGROUP



EARLY LEARNING CENTER AND MANAVON ELEMENTARY

Phoenixville Area School District





plan highlights first floor

- Media center as hub of all circulation
- Sharing of K-1 and 2-5 media centers vertically
- Split dining concept
- Community gymnasium
- Breakout space differentiation depending on grade structure
- Push-in concept for learning support and special education
- Itinerant and support instructor workspaces
- Learning stair as the vertical circulation
- Clear flow-through from parent drop off to bus drop off in "main hall"
- Expression of building systems

FIRST FLOOR

- 1 GYMNASIUM
- 2 ADMINISTRATION
- 3 LEARNING SPACES*
EACH LEARNING SPACE AREA IS COMPRISED OF GROUP
LEARNING AREAS AND LEARNING STUDIOS (SEE INSET)
- 4 GROUP LEARNING AREA
- 5 LEARNING STUDIO
- 6 LEARNING RESOURCE CENTER
- 7 MUSIC
- 8 NURSE
- 9 SUPPORT
- 10 DINING



plan highlights second floor

- Media center as hub of all circulation
- Sharing of K-1 and 2-5 media centers vertically
- Split dining concept
- Community gymnasium
- Breakout space differentiation depending on grade structure
- Push-in concept for learning support and special education
- Itinerant and support instructor workspaces
- Learning stair as the vertical circulation
- Clear flow-through from parent drop off to bus drop off in "main hall"
- Expression of building systems

SECOND FLOOR

- 1 GYMNASIUM
- 2 ADMINISTRATION
- 3 LEARNING SPACES*
EACH LEARNING SPACE AREA IS COMPRISED OF GROUP
LEARNING AREAS AND LEARNING STUDIOS
(SEE INSET ON FIRST FLOOR PLAN)
- 4 LEARNING RESOURCE CENTER
- 5 ART
- 6 SUPPORT



building specifics

building area: 152,000 s.f.
site size: 50 acres
student capacity: 1,100 – 1,229
grades: K-1 and 2-5
construction timeframe: 10/15-8/17

building construction cost: \$31,300,000
site construction cost: \$ 9,500,000
total construction cost: \$40,800,000

HVAC: ground sourced heat pump system





SCHRADERGROUP

COMMUNITY
You have feet in your shoes.

ABILITY
You can steer yourself any direction you choose.”

RESPECT
Dr. Seuss, *Oh, The Places You'll Go*



SCHRADERGROUP



SCHRADERGROUP



KARIBUNI
WELCOME
Manayon
Elementary School

LESSON
BELIEVE
CONNECT
LISTEN
HANDS ON
IMAGINE

SCHRADERGROUP





SCHRADERGROUP



SCHRADERGROUP



SCHRADERGROUP



SCHRADERGROUP



SCHRADERGROUP





SCHRADERGROUP



SCHRADERGROUP



SCHRADERGROUP



SCHRADERGROUP

- 1 proposed project
- 2 21st century elementary schools
- 3 site visit review
- 4 feedback session
- 5 next steps



10 minutes “dot” exercise

10 minutes brainstorming reasons for selections

10 minutes goals for project going forth

15 minutes report out

- 1 proposed project
- 2 21st century elementary schools
- 3 site visit review
- 4 feedback session
- 5 next steps



CONCEPTUAL SCHEDULE

planning process	oct 18 - feb 19
design process	feb 19 – feb 20
permitting	feb 19 – feb 20
bidding?	feb 20 – apr 21
Construction	may 20 – dec 21

SCHRADERGROUP